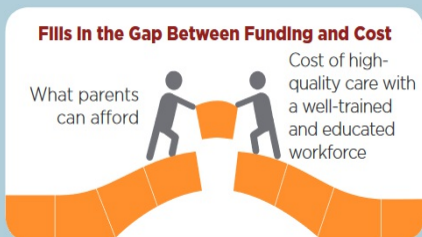


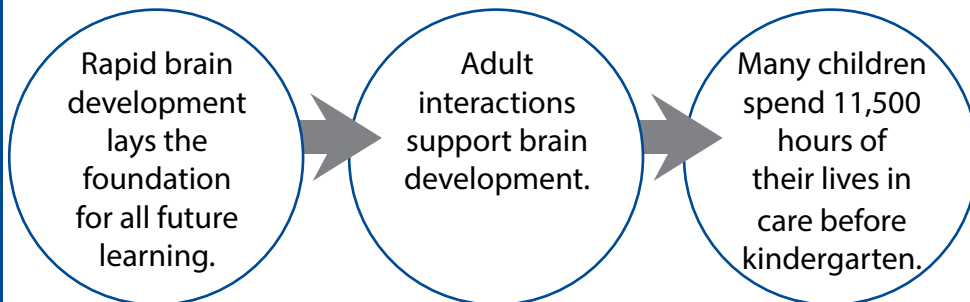
Supporting Arkansas' Early Childhood Workforce: Boosting Wages to Increase Quality of Care

Boost Wages with a Refundable Tax Credit Linked to Education and Certification

- Child care programs pay staff based on what they can afford.
- Operating budgets are tight and parents can't afford to pay more.
- The result is that staff are underpaid and stressed, with little incentive for higher education, which can better promote healthy child development.

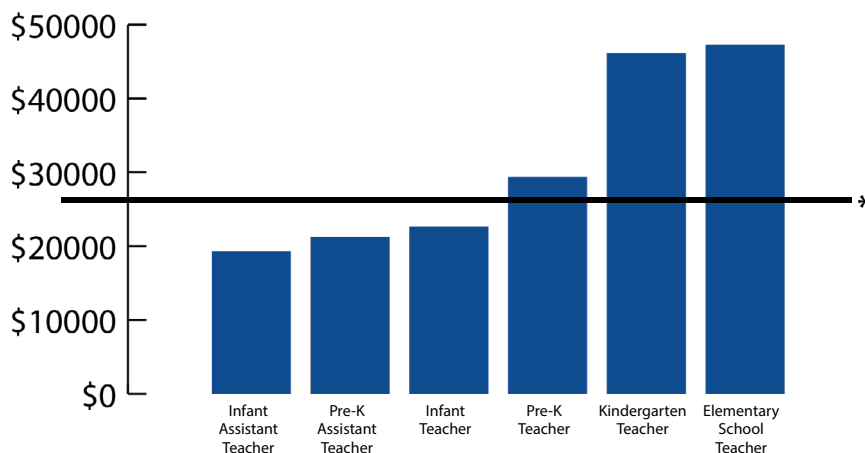


What We Know



Child Care Programs Need a Quality Workforce; Low Wages Undermine Quality

Arkansas Median Annual Workforce Earnings



Arkansas Early Childhood Teachers

57% have trouble meeting basic economic needs like medical expenses, rent, and utilities.

40% are food insecure (run out of food, cut the size of meals, or skip meals).

Vote YES for SB618.

The workforce that supports all workforces needs this refundable tax credit.